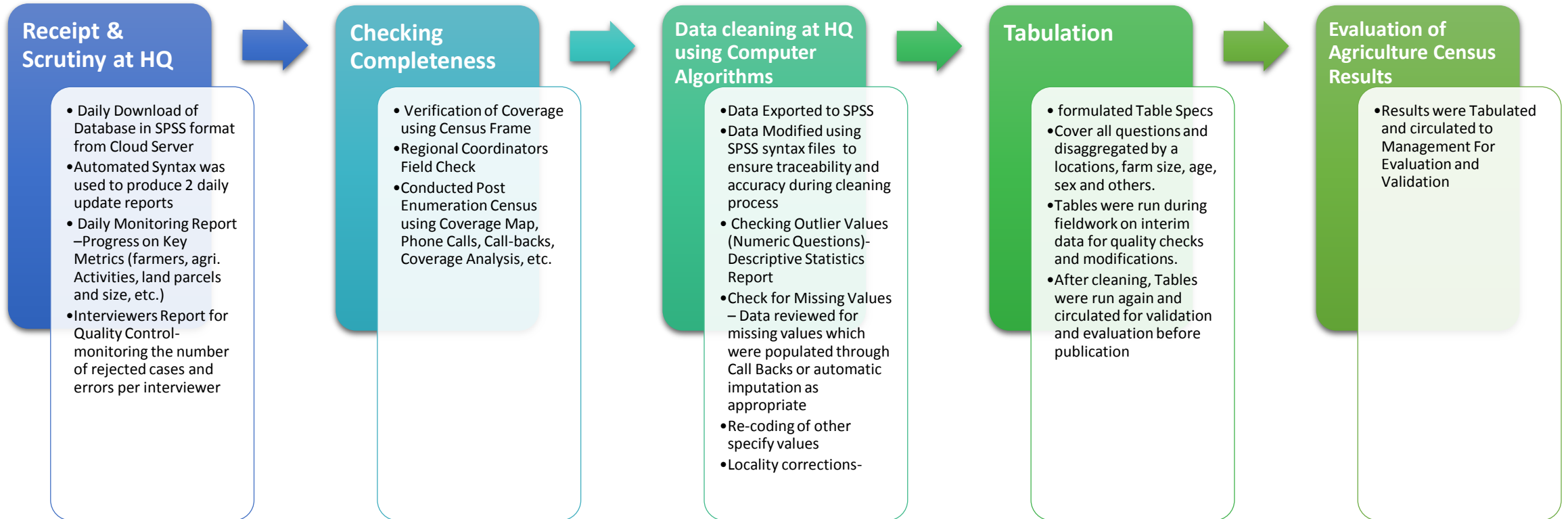


2020 FIJI AGRICULTURE CENSUS

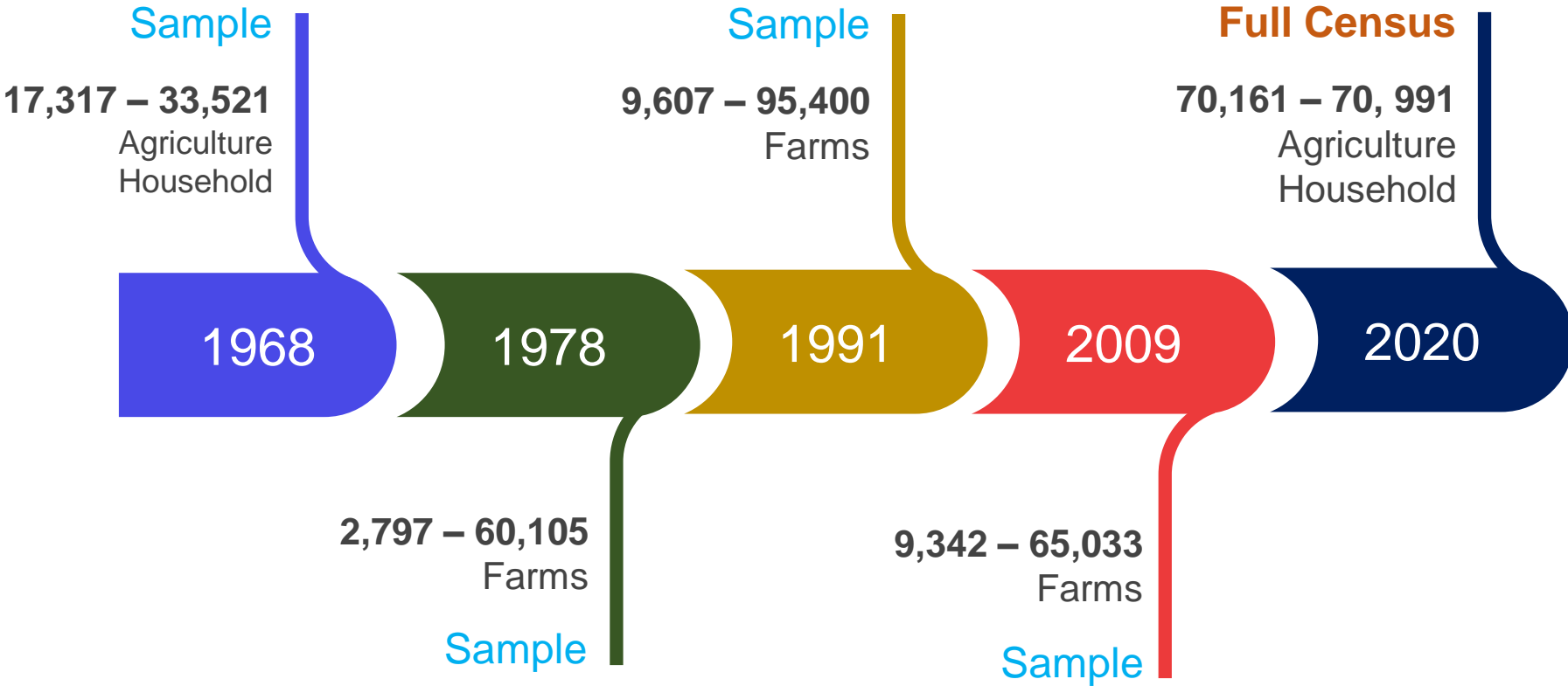
Fiji Geospatial Information Management Council Quarterly Meeting

18th February, 2021

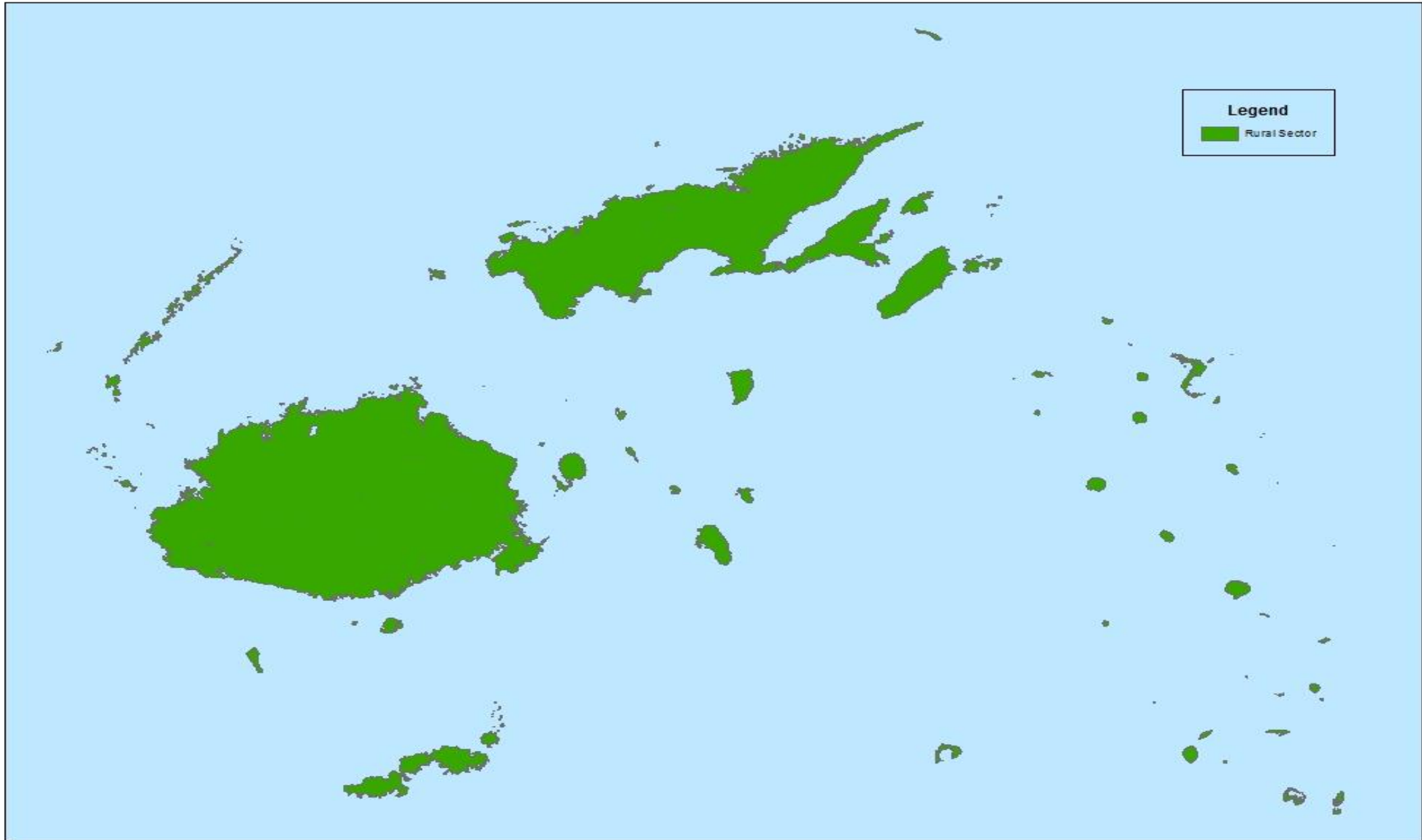
DATA PROCESSING



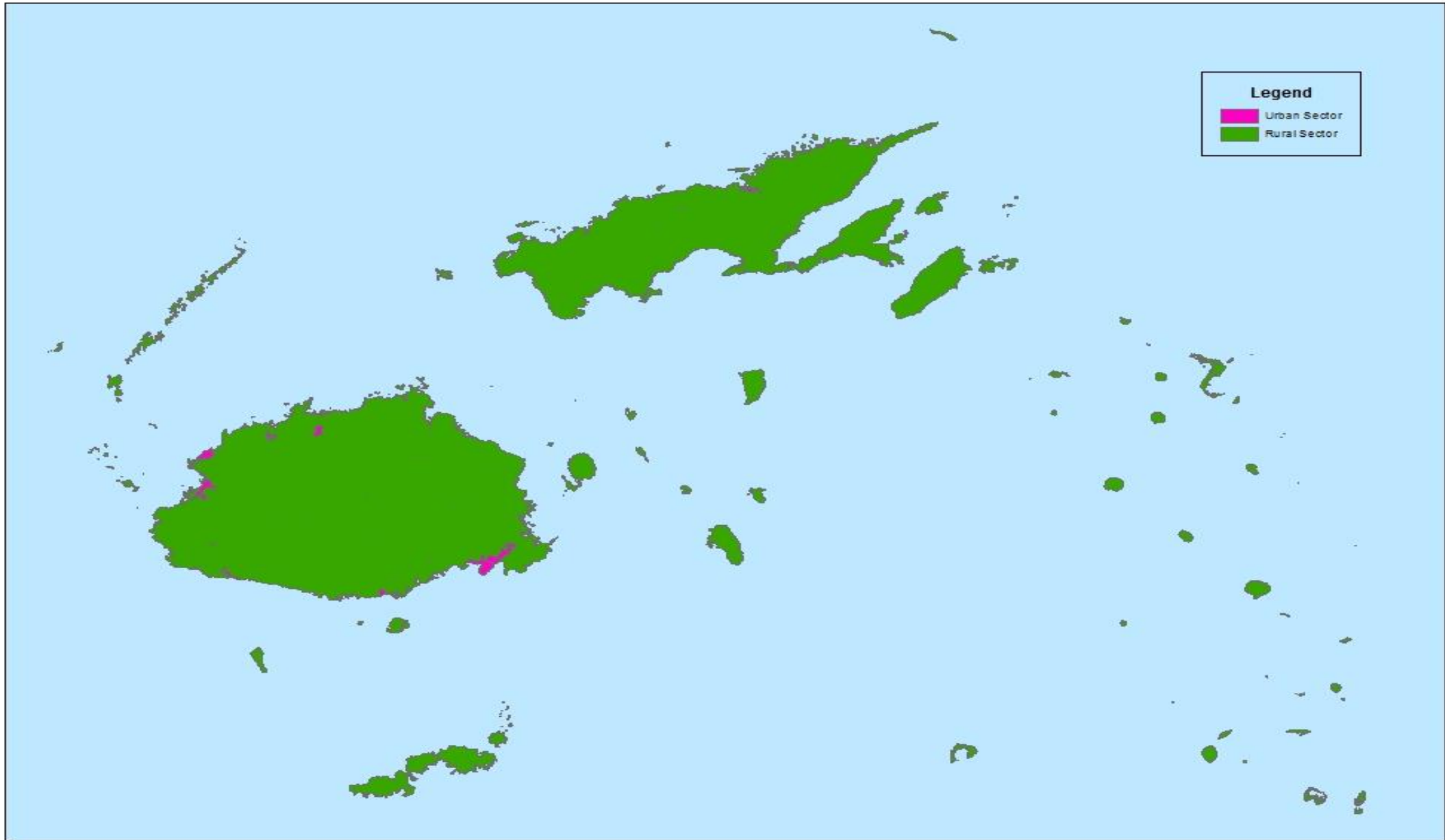
AGRICULTURE CENSUS HISTORY- METHODOLOGY



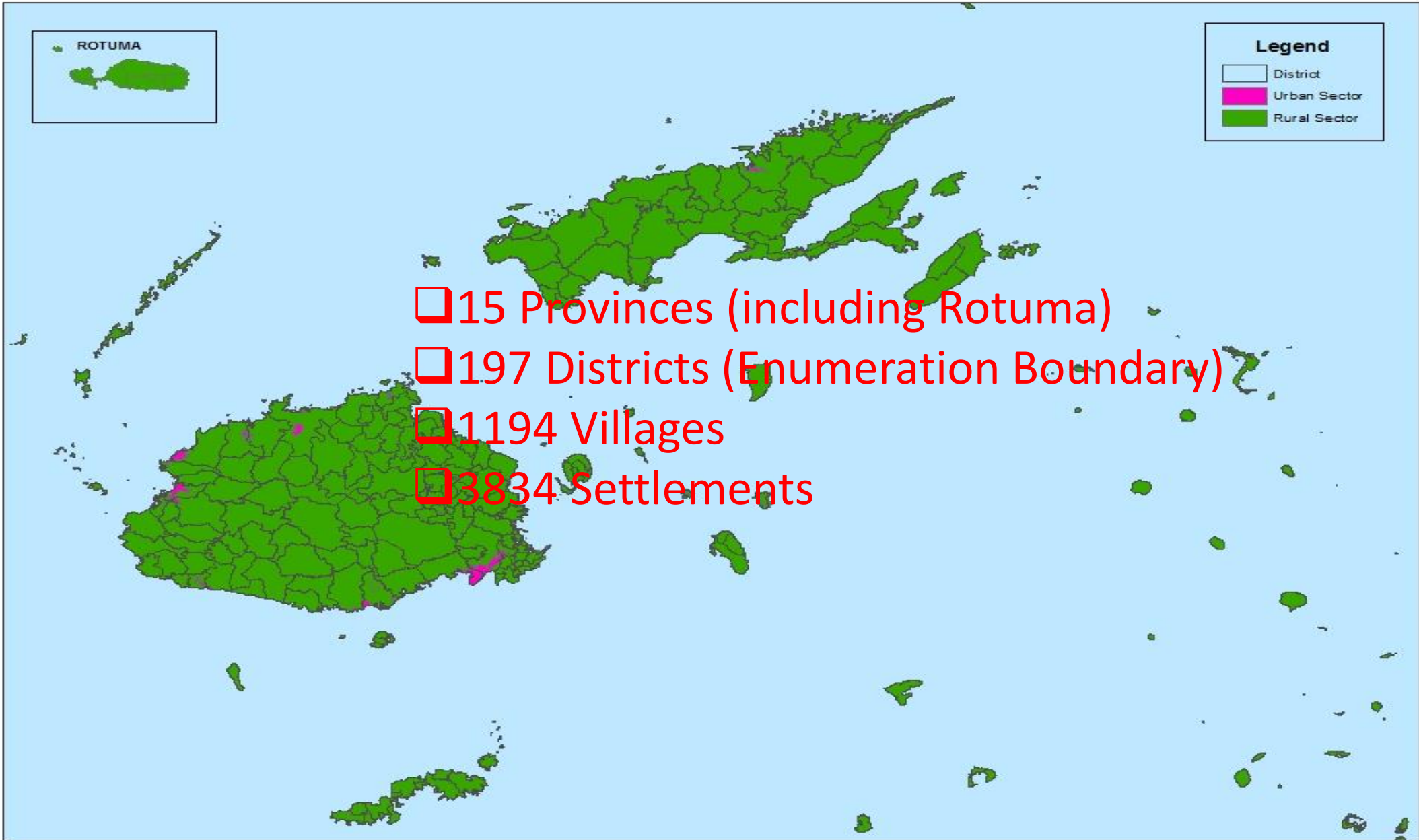
CENSUS BOUNDARY DEMARCATION



CENSUS BOUNDARY DEMARCATION



CENSUS BOUNDARY DEMARCATION



ACTIVITIES UNDERTAKEN

- Initial Description of the districts boundary-Topographic & Settilite Imageries
- Field verification and ground truthing to confirm boundaries on the ground and to locate identifiable features on the ground to assist Enumerators & Field Supervisors locate their boundary of work and starting point for enumeration
- Village Headmen and Advisory councillors were contacted and visited to confirm villages and settlements within each Enumeration Boundary (district)
- All villages and settlements within the peri urban areas were visited and the economic activities of the households within the areas were identified.
- Demarcation of the peri urban boundary
- Revision of the initial EBs description taking into account what has been edited from the field
- Final printing of EB Maps and boundary descriptions

DESCRIPTION OF BOUNDARY

SUVA DISTRICT

EA NUMBER: 12-07-(A-H)-1

Starting Point: Point where Suva/Veivatuloa District Boundary (Rewa/Namosi) Province bdy crosses Queens Road at coordinate [4992 – 7367] 0.08 Km W of Vunisoco Road Junction.

Description:

From starting point follow District Boundary Northwest to Waimanu River where it meets Suva/Namosi Distict boundary [4656 - 7932]. Follow Waimanu River Northeast upstream to mouth of Waiturua creek where it meets Suva/Waidina district boundary- 4765-8000 (Rewa/Naitasiri province bdy). Continue NE along Suva/Waidina district bdy on Waimanu River and N to mouth of unnamed creek [6251 - 8704] where it meets Vuna/Suva district bdy. Follow district boundary SW to the point where Suva/Vuna District Bdy meet Suva/Naitasiri district bdy on Nakobalevu Road [6339 - 8341]. Follow Suva/Naitasiri district bdy (Rewa/Naitasiri province bdy) SW to Lami Urban Bdy [6600 - 7874]. Follow urban boundary SW and S to high water mark. Continue SW along highwater to coordinate [5128-7247] on Rewa/Namosi Provincial Bdy. Follow provincial Bdy NW back to Starting point.

Note:

Lami and Suvavou Village are excluded.

Qaui Settlement is excluded. Enumerator to include Maloku Settlement North of Qaui

All Settlements from end of Lami town bdy on both side of Queens Highway to Veisari River (West of Namuka Village) are also excluded.

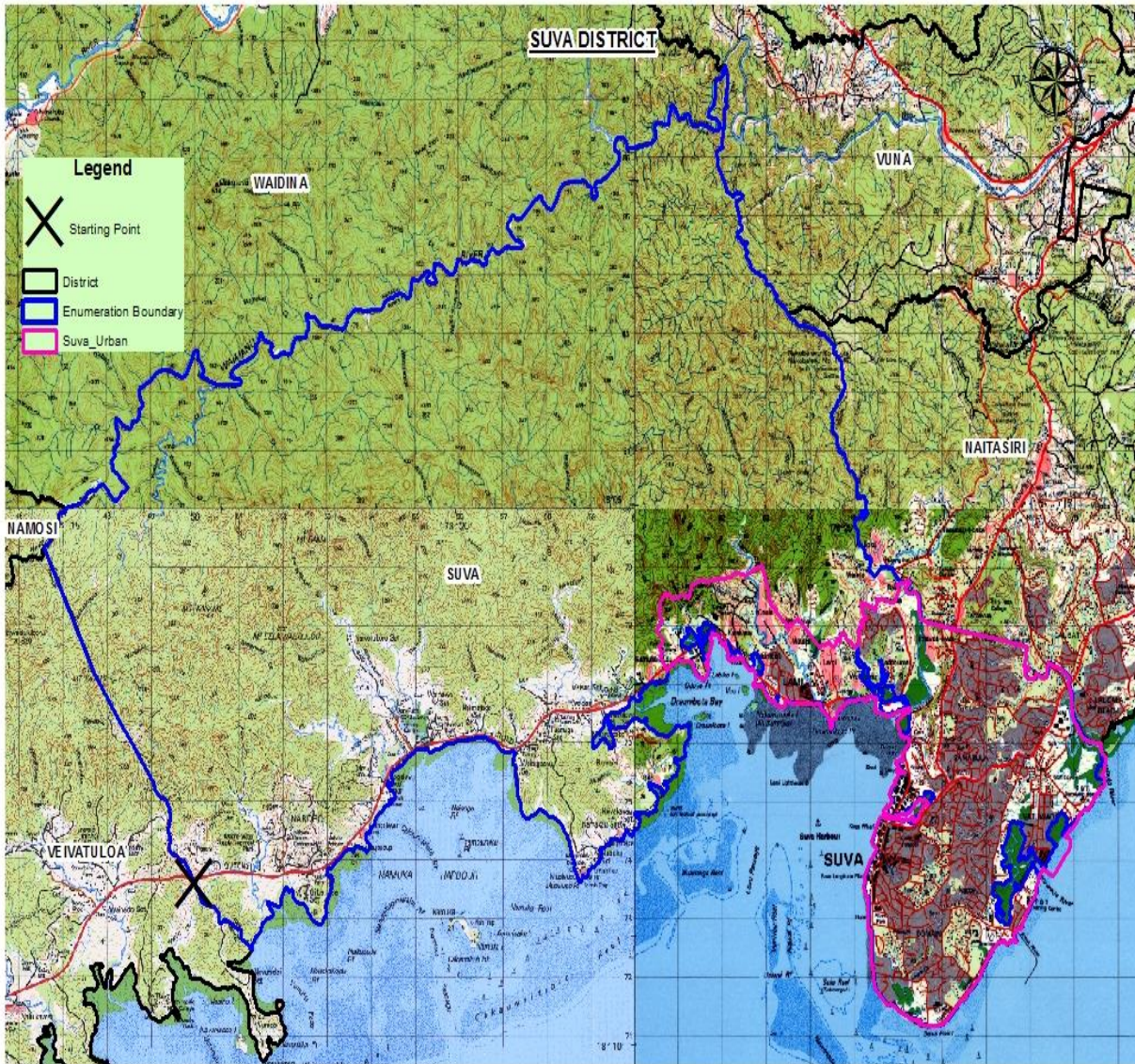
All houses along Queens Highway from starting point to Vacoko Settlement are included

Matanisivaro, Matata, Naivikinikini, Kalekana, Lami, Wainidinu, Nadonumai Settlements are excluded since they are located inside Lami town boundary.

Marata, Balebu settlement are included and can be accessed through Wailoku road.

Census will not be conducted in urban area (Suva City)

Localities: Kalokolevu village, Muaiwuso, Nabaka, Togalevu, Waqanake village, Wainawa, Namakala, Ucuinamoro, Dibulu Laqere, Wanisalato, Navutu, Waiseresere, Mataniborosi, Bilo Rd, Mua -I –Cake, Ben Naiveli Farm, Vacoko, Wainigasau, Naboro Dairy Farm, Naboro Gilbertese, Naboro, Naikorokoro settlement, Naimataga, Veisari, Qaui Maloku, Togawainimokamoka, Veisari, Wainimokamoka, Vacoko, Veikuru#1, Veisari Bilo, Veisari Magowan Resident, Veisari Methodist Compound [Vunimoli], Veisari Orchid Island, Osonabukete, Veisari Plant World, Tauliga, Waikerekere #2, Vugalei, Vuniivi, Vunikasaga, Bali, Koio, Marata, Wainigasau, Wainisaqasaga, Koroivono, Naitevutevu, Naivakacau, Namakala, Monfort Boys Town, Naboro Primary School, Leyland Piggery, Naval Base (Togalevu)

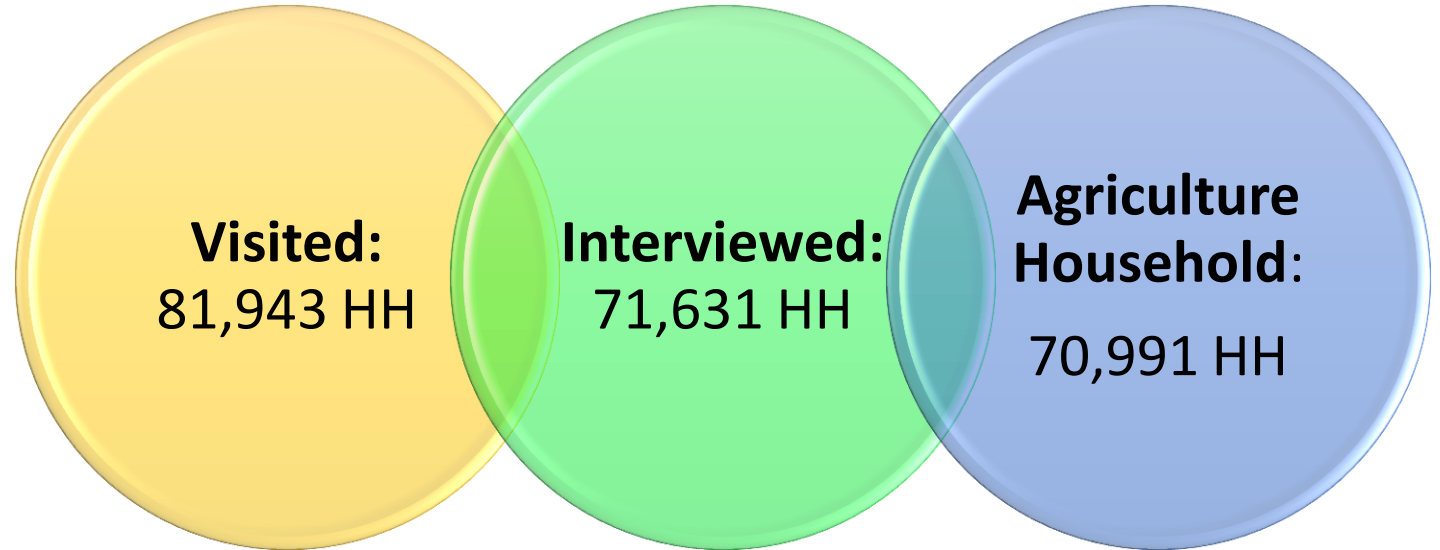


COVERAGE

Planned Coverage

1. All Household in the Rural Area
2. All Household in the selected Peri-Urban Areas who mainly practiced Agriculture activities

Actual Coverage



The attempt to interview the remaining households were unsuccessful due to the following reasons.

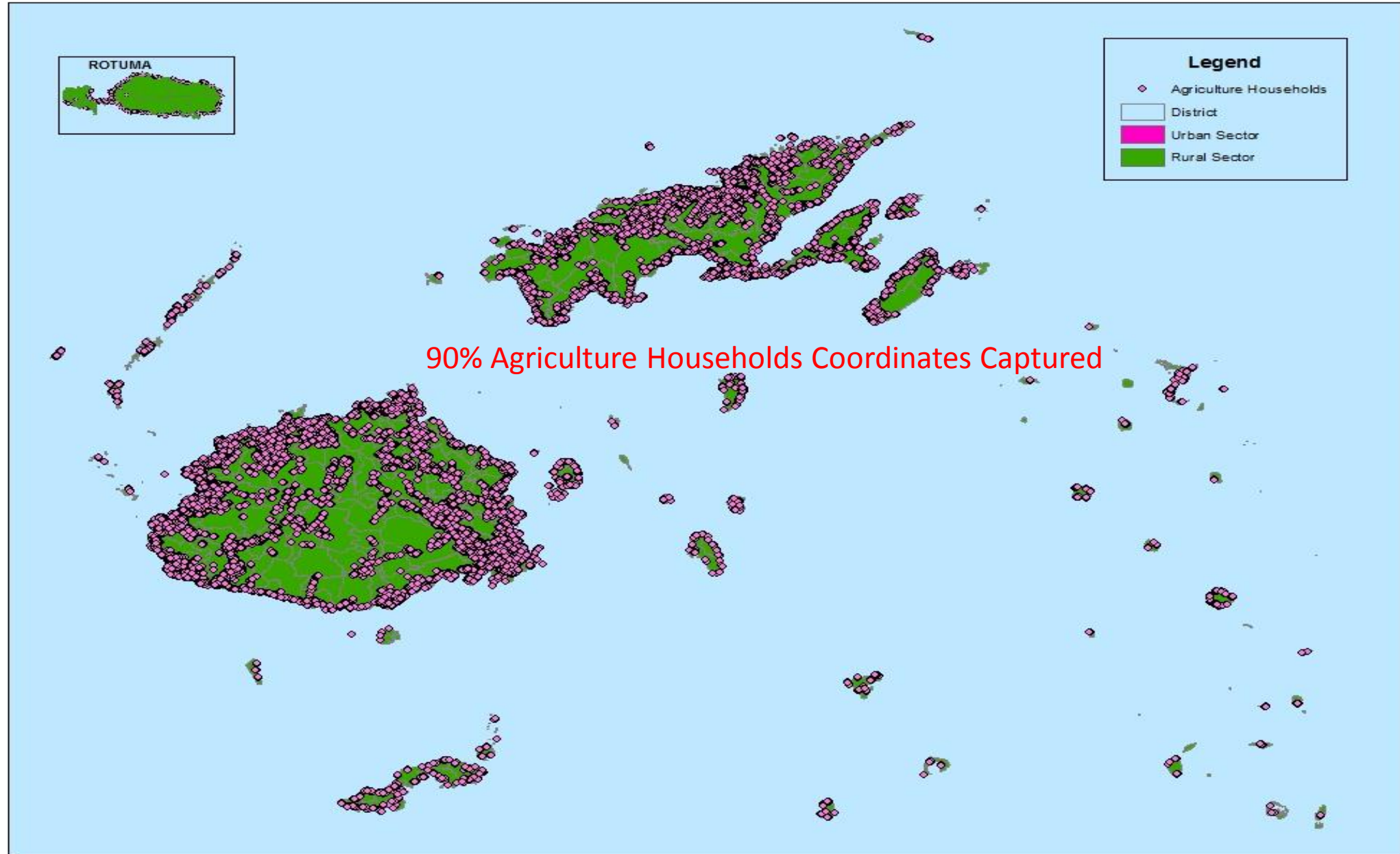
- a) Refusal after 3 attempts
- b) Entire Household Absent for 6 months or more
- c) No Household Member at Home despite 3 attempts

Total of 197 districts and 4,178 Localities in the rural areas and part of the peri-urban areas of Fiji were covered.

The selection of areas in the peri-urban sector was based on the main economic activity findings from the 2017 Population and Housing Census. The selected areas were identified, verified on the ground and demarcated by the MoA GIS team before it is recognised as a 2020FAC boundary.

2020FAC Demarcated areas can be viewed in the 2020FAC Census Boundary Report

COVERAGE



DATA DISSEMINATION & ACHIVING

The final result of the 2020FAC is anticipated to be tabulated, analysed, printed and published in four (4) Volumes;

Volume I: General Table Report

Volume II: Enumeration Boundary Report

Volume III: Gender Analysis Report

Volume IV: Administration Report

Establishment of Agriculture Statistics Online Output System whereby results will be presented through online dashboard system and Arc-GIS (Maps), Videos and Info graphics- MoA Website

The 2020FAC micro data, final tables and final reports will be secured in the Ministry of Agriculture (MoA) main server located at the MoA IT room with limited access by the Stats IT Officers.

Thank You